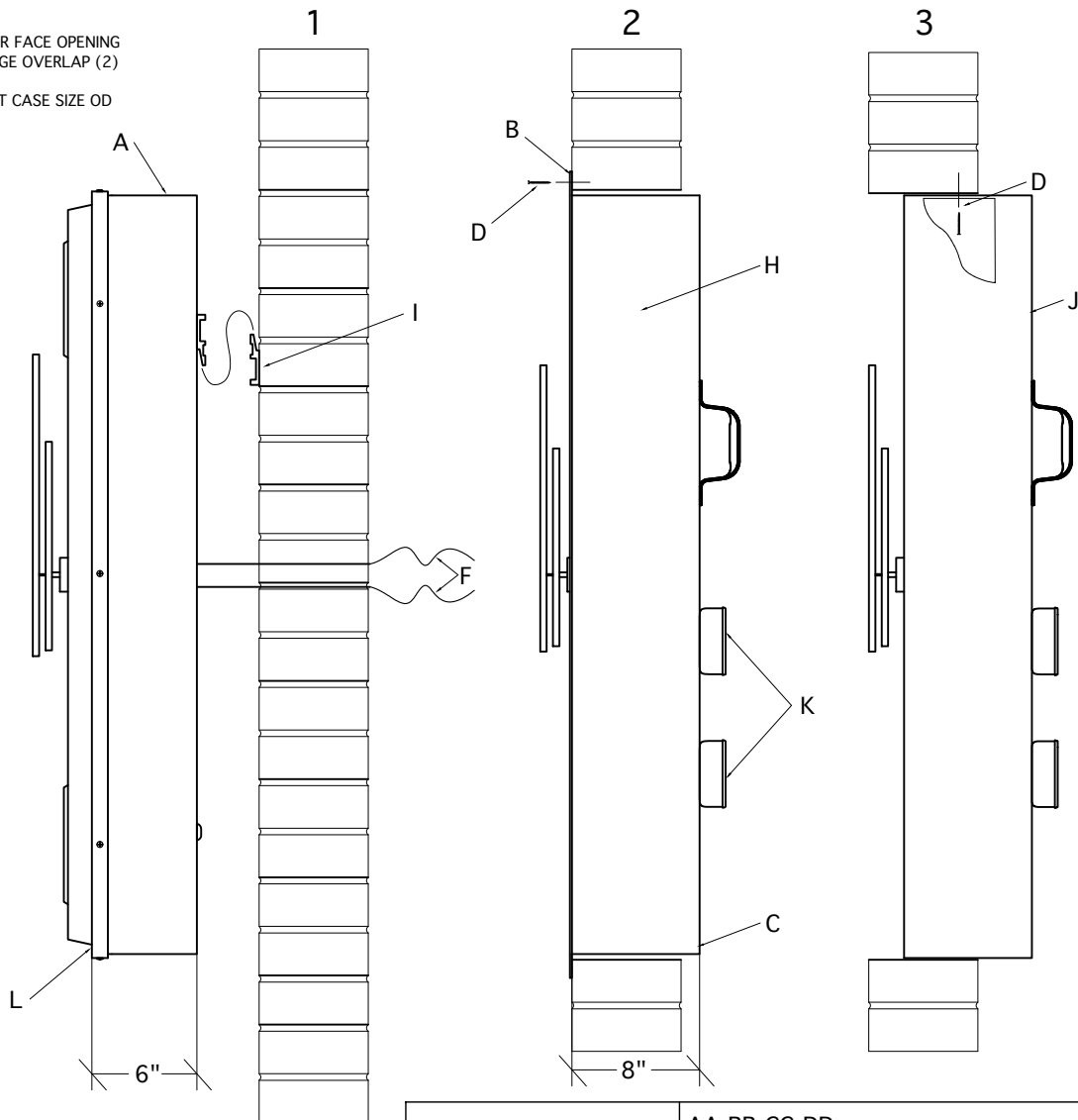
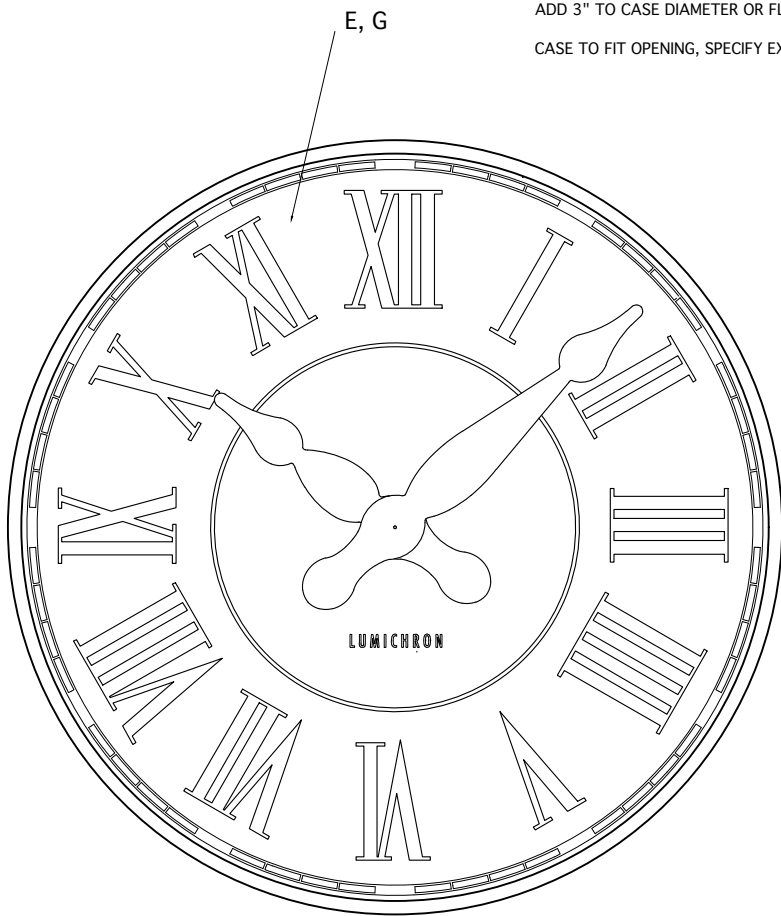


SHOWN: 48" CLOCK

NOTES:  
 DEDUCT 2" FROM CASE DIAMETER FOR FACE OPENING  
 ADD 3" TO CASE DIAMETER OR FLANGE OVERLAP (2)  
 CASE TO FIT OPENING, SPECIFY EXACT CASE SIZE OD



FEATURES	
A	FULLY ENCLOSED ALL-ALUMINUM CASE, SCREENED VENTS & DRAIN HOLES (1,2,3)
B	1-1/2" FLANGE FOR MOUNTING, LIP OVER ROUGH OPENING (2)
C	6-8" (DEPENDING ON FACE SIZE) OF CLOCK BODY THROUGH THE WALL (2,3)
D	CLOCK FASTENS WITH 8 INSIDE SCREWS TO JAMS, OR THROUGH FLANGE - SPECIFY
E	ILLUMINATION (SEE WIRE DIAGRAM), BACK-LIT WITH WHITE 100,000 HR SIGN-GRADE LED'S (SPECIFY COLOR TEMPERATE AS NEEDED) (1,2,3)
F	24 POWER FOR IMPULSE DRIVE 24V SLAVE CLOCK MOVEMENTS (SEE WIRE DIAGRAM), 120V FOR ILLUMINATION (1)
G	TRANSLUCENT WHITE SIGN-GRADE, UV PROTECTED, POLYCARBONATE DIAL (1,2,3)
H	ARCHITECTURAL GRADE POWDER COATING (1,2,3)
I	STAINLESS STEEL FASTENERS THROUGHOUT (1,2,3)
J	SERVICE ACCESS THROUGH REMOVABLE BACK AND BUTTERFLY DOORS (2,3)
K	CONNECTION J-BOXES (2,3)
L	FACE RETAINER FOR THROUGH-FRONT SERVICE ACCESS (1)

1. OPTIONAL FACE FABRICATION STYLES, MOUNTING, SPECIFY:  
 (1) EMBOSSED - SURFACE MOUNT  
 (2) FLAT - FLUSH MOUNT  
 (3) FULL METAL OVERLAY - INSET MOUNT

NOTE: DIALS AND MOUNT-TYPE INTERCHANGEABLE

ORDERING KEY		AA-BB-CC-DD (EX.): FM-48-STD. ROMAN/ROMAN SPADE*-BLACK)
AA	MODEL NUMBER	SM (1), FM (2), IM (3)
BB	SIZE	SPECIFY
CC	DIAL/HAND	SEE SEPARATE SELECTION PAGES*
DD	COLOR	BLACK (DEFAULT), BRONZE, SILVER, GREY, SPEC.

TITLE:  
**CASE CLOCK > 48" DIAMETER AND LARGER**

SCALE:	DATE:	DRAWN:	CHECKED:
DRAWING NO:		REVISION:	

**LUMICHRON**  
 COMMERCIAL CLOCKS

LUMICHRON.COM  
 2215 29TH ST. GRAND RAPIDS, MI. 49508  
 616-245-8888 IAN@LUMICHRON.COM