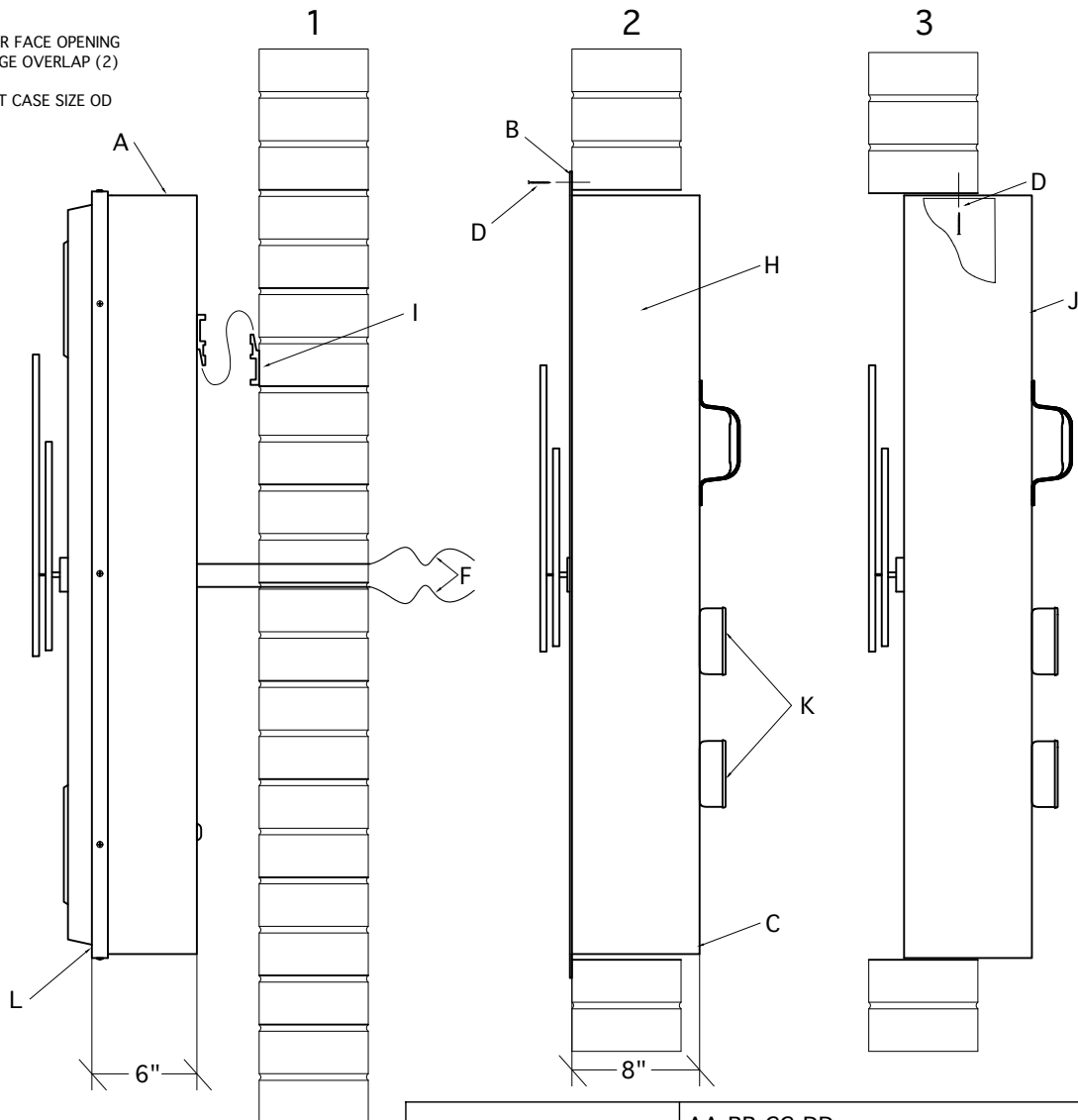
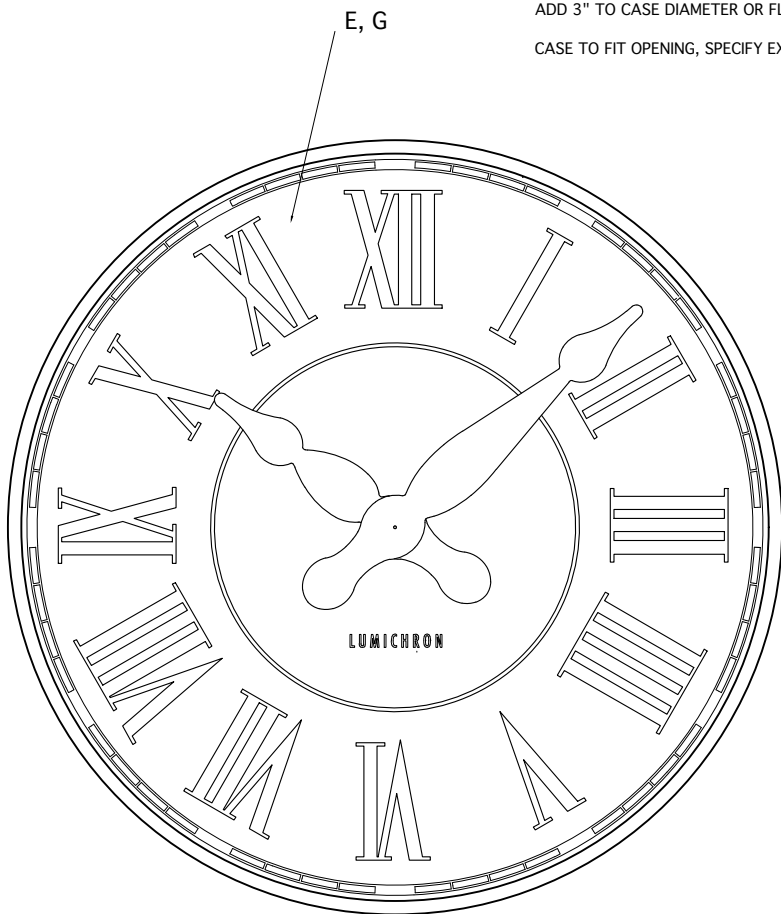


SHOWN: 48" CLOCK

NOTES:
 DEDUCT 2" FROM CASE DIAMETER FOR FACE OPENING
 ADD 3" TO CASE DIAMETER OR FLANGE OVERLAP (2)
 CASE TO FIT OPENING, SPECIFY EXACT CASE SIZE OD



| FEATURES | |
|----------|--|
| A | FULLY ENCLOSED ALL-ALUMINUM CASE, SCREENED VENTS & DRAIN HOLES (1,2,3) |
| B | 1-1/2" FLANGE FOR MOUNTING, LIP OVER ROUGH OPENING (2) |
| C | 6-8" (DEPENDING ON FACE SIZE) OF CLOCK BODY THROUGH THE WALL (2,3) |
| D | CLOCK FASTENS WITH 8 INSIDE SCREWS TO JAMS, OR THROUGH FLANGE - SPECIFY |
| E | ILLUMINATION (SEE WIRE DIAGRAM), BACK-LIT WITH WHITE 100,000 HR SIGN-GRADE LED'S (SPECIFY COLOR TEMPERATE AS NEEDED) (1,2,3) |
| F | 24 POWER FOR IMPULSE DRIVE 24V SLAVE CLOCK MOVEMENTS (SEE WIRE DIAGRAM), 120V FOR ILLUMINATION (1) |
| G | TRANSLUCENT WHITE SIGN-GRADE, UV PROTECTED, POLYCARBONATE DIAL (1,2,3) |
| H | ARCHITECTURAL GRADE POWDER COATING (1,2,3) |
| I | STAINLESS STEEL FASTENERS THROUGHOUT (1,2,3) |
| J | SERVICE ACCESS THROUGH REMOVABLE BACK AND BUTTERFLY DOORS (2,3) |
| K | CONNECTION J-BOXES (2,3) |
| L | FACE RETAINER FOR THROUGH-FRONT SERVICE ACCESS (1) |

1. OPTIONAL FACE FABRICATION STYLES, MOUNTING, SPECIFY:
 (1) EMBOSSED - SURFACE MOUNT
 (2) FLAT - FLUSH MOUNT
 (3) FULL METAL OVERLAY - INSET MOUNT

NOTE: DIALS AND MOUNT-TYPE INTERCHANGEABLE

| ORDERING KEY | | AA-BB-CC-DD (EX.): FM-48-STD. ROMAN/ROMAN SPADE*-BLACK) |
|--------------|--------------|--|
| AA | MODEL NUMBER | SM (1), FM (2), IM (3) |
| BB | SIZE | SPECIFY |
| CC | DIAL/HAND | SEE SEPARATE SELECTION PAGES* |
| DD | COLOR | BLACK (DEFAULT), BRONZE, SILVER, GREY, SPEC. |

TITLE:
CASE CLOCK > 48" DIAMETER AND LARGER

| | | | |
|-------------|-------|-----------|----------|
| SCALE: | DATE: | DRAWN: | CHECKED: |
| DRAWING NO: | | REVISION: | |

LUMICHRON.COM
 11460 Dorsett Road, Maryland Heights, MO 63043
 616-245-8888 SALES@LUMICHRON.COM